

**FABP4 Antibody**  
**Mouse Monoclonal Antibody (Mab)**  
**Catalog # AM2235B****Specification**

---

**FABP4 Antibody - Product Information**

Application	WB, IHC-P,E
Primary Accession	<a href="#">P15090</a>
Reactivity	Human, Mouse
Host	Mouse
Clonality	Monoclonal
Isotype	IgG1
Calculated MW	14719
Antigen Region	1-132

**FABP4 Antibody - Additional Information****Gene ID** 2167**Other Names**

Fatty acid-binding protein, adipocyte, Adipocyte lipid-binding protein, ALBP, Adipocyte-type fatty acid-binding protein, A-FABP, AFABP, Fatty acid-binding protein 4, FABP4

**Target/Specificity**

Purified His-tagged FABP4 protein was used to produced this monoclonal antibody.

**Dilution**

WB~~1:1000

IHC-P~~1:25

E~~Use at an assay dependent concentration.

**Format**

Purified monoclonal antibody supplied in PBS with 0.09% (W/V) sodium azide. This antibody is purified through a protein G column, followed by dialysis against PBS.

**Storage**

Maintain refrigerated at 2-8°C for up to 2 weeks. For long term storage store at -20°C in small aliquots to prevent freeze-thaw cycles.

**Precautions**

FABP4 Antibody is for research use only and not for use in diagnostic or therapeutic procedures.

**FABP4 Antibody - Protein Information****Name** FABP4

**Function** Lipid transport protein in adipocytes. Binds both long chain fatty acids and retinoic acid. Delivers long-chain fatty acids and retinoic acid to their cognate receptors in the nucleus.

**Cellular Location**

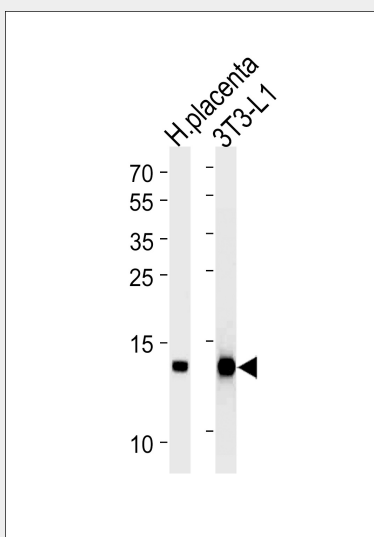
Cytoplasm {ECO:0000250|UniProtKB:P04117}. Nucleus {ECO:0000250|UniProtKB:P04117}.

Note=Depending on the nature of the ligand, a conformation change exposes a nuclear localization motif and the protein is transported into the nucleus. Subject to constitutive nuclear export. {ECO:0000250|UniProtKB:P04117}

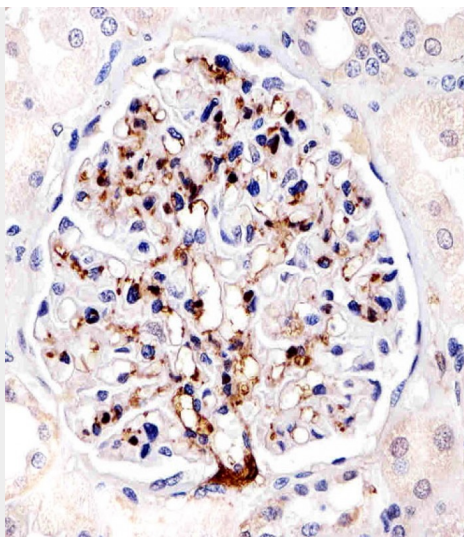
**FABP4 Antibody - Protocols**

Provided below are standard protocols that you may find useful for product applications.

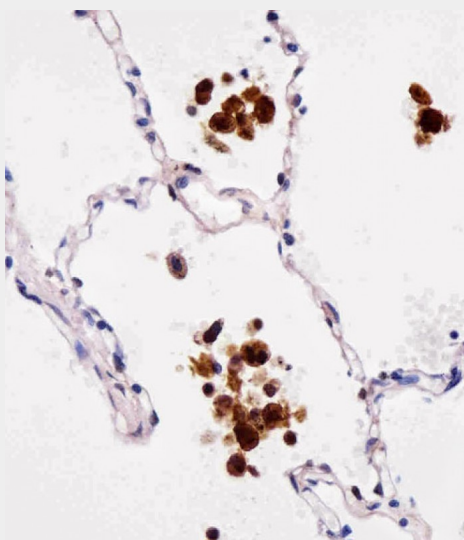
- [Western Blot](#)
- [Blocking Peptides](#)
- [Dot Blot](#)
- [Immunohistochemistry](#)
- [Immunofluorescence](#)
- [Immunoprecipitation](#)
- [Flow Cytometry](#)
- [Cell Culture](#)

**FABP4 Antibody - Images**

FABP4 Antibody (Cat. #AM2235b) western blot analysis in mouse 3T3-L1 cell line and human placenta tissue lysates (35µg/lane). This demonstrates the FABP4 antibody detected the FABP4 protein (arrow).



Immunohistochemical analysis of paraffin-embedded H. kidney section using FABP4 Antibody(Cat#AM2235B). AM2235B was diluted at 1:25 dilution. A undiluted biotinylated goat polyvalent antibody was used as the secondary, followed by DAB staining.



Immunohistochemical analysis of paraffin-embedded H. lung section using FABP4 Antibody(Cat#AM2235B). AM2235B was diluted at 1:25 dilution. A undiluted biotinylated goat polyvalent antibody was used as the secondary, followed by DAB staining.

#### **FABP4 Antibody - Background**

Lipid transport protein in adipocytes. Binds both long chain fatty acids and retinoic acid. Delivers long-chain fatty acids and retinoic acid to their cognate receptors in the nucleus (By similarity).

#### **FABP4 Antibody - References**

Baxa C.A., et al. Biochemistry 28:8683-8690(1989).  
Kalnine N., et al. Submitted (MAY-2003) to the EMBL/GenBank/DDBJ databases.  
Ebert L., et al. Submitted (JUN-2004) to the EMBL/GenBank/DDBJ databases.  
Mural R.J., et al. Submitted (JUL-2005) to the EMBL/GenBank/DDBJ databases.  
Sjoebloom T., et al. Science 314:268-274(2006).

#### **FABP4 Antibody - Citations**

- [LDHB and FABP4 are Associated With Progression and Poor Prognosis of Pancreatic Ductal](#)

[Adenocarcinomas.](#)